

Field Notes

Newsletter of the Arkansas Archeological Society

No. 437 March/April 2024

Visualizing the Past



Arkansas Archeology Month 2024

This precontact house is one of 60 identified at the Richards Bridge site (3CT131), a Parkin phase town in Northeast Arkansas that was occupied during the late Mississippian period, circa 1450 C.E. The images above show representations of the same archaeological site using four distinct types of technology: from top magnetic susceptibility, electrical resistance, excavation photography and mapping.



  Arkansas Archeological Survey: arkansasarcheology.org
Arkansas Archeological Society: arkarch.org

 Arkansas
Archeological
Society

from your editor

It is a further purpose of this Society to encourage the scientific investigation, study, and interpretation of our cultural heritage, and to publish and distribute the results of these investigations, particularly those relating to Arkansas.

— from the Constitution of the AAS, Article II, Section 2

On the cover: The 2024 Archeology Month poster designed by Rachel Tebbetts. You can find the poster on page 12 or download it here: <https://archeology.uark.edu/learn-discover/archeology-month/>

ANNOUNCEMENTS

2024 Arkansas Archeology Month

Arkansas Archeology Month is already underway! Follow events for Archeology Month on the ARAS and AAS calendars: <https://archeology.uark.edu/learn-discover/eventscalender/> and <https://www.arkarch.org/2017/04/04/arkansas-archeology-month/>

The 2024 Training Program

Get ready to dust off your trowels and prepare for the Society dig! This year's Training Program will return to Nakuukuwidish/Holman Springs, a major Caddo saltworks site near De Queen, Arkansas. Read about the upcoming June 2024 Training Program in the following pages and find the registration materials in the color insert. For first-timers, you should choose your Orientation session on the Registration form. **ALL** participants (meaning everyone who will be on site, including professional archeologists) are required to fill out the Participation Agreement. This is for everyone's protection and to ensure a safe environment. Information on seminars and basic schedule are in the article starting on page 6. Scholarship information for the Training Program is on page 11. Other information for participants will be in the packet you receive after registering, as usual.

Need Help Registering for the Training Program?

Is this your first time attending an AAS Training Program, and the registration process seems a bit daunting? Do you need a refresher on how to fill out and submit the required paperwork? Have no fear! This year, we are offering a registration form walk-through session for those who have questions about the registration form or would like to see how it should be filled out and submitted. This session is being held Tuesday, April 9th from 5:30pm-6:30pm (Central Time Zone). Zoom link: <https://uark.zoom.us/j/84079611502?pwd=VUVNQXBRL2hyK3VFaGRiUDdPcHc1dz09> or join with the meeting ID: 840 7961 1502 and passcode: AAS24!

Caddo Conference April 26 and 27

The 65th Caddo Conference will be held April 26-27 at the Don Tyson Center for Agricultural Sciences at the University of Arkansas, Fayetteville. The Caddo Culture Club will host a dance at the Tyson Center on Saturday afternoon. For more information and to pre-register, see: <http://www.caddoconference.org/wp-content/uploads/2024/02/65th-Caddo-Conference-CfP.pdf>

Contact Your Newsletter Editor: Do you have something for the Newsletter? I welcome comments on anything previously published in *Field Notes*, or new contributions from members. General guidelines for submissions are on p. 15. Contact me at: Julia Fan, Arkansas Archeological Society, 2475 North Hatch Ave., Fayetteville, AR, 72704, or send me an email at juliaf@uark.edu. My phone number is 479-575-2161. Please note, I do not have the membership database and cannot check your membership status. Please contact Gillian Steeno for that information at gmsteeno@uark.edu.

Digital Archeology at Nakuukuwidish: The 2024 Training Program

Carl G. Drexler - Arkansas Archeological Survey, Magnolia

The Arkansas Archeological Society Training Program will return to Sevier County for one last round of fieldwork at Nakuukuwidish (3SV29) this June. I hope you decide to come and join in, as there are a lot of great opportunities awaiting us and there is a lot of important work to be done. Let's talk about the plan, knowing that what you are about to read has been developed in discussion with both the Society's Executive Committee and representatives of the Caddo Nation.

Nakuukuwidish/Holman Springs

Let us talk about the name change first. The name "Holman Springs," well, technically, "Holman Spring," was created in 1961. Emily Blasingham, a River Basin Survey archeologist in the area who had been corralled by Ernest Sibert, of DeQueen, who took her around to many archeological sites in the area, put together a lot of the early site forms for Sevier County. She gave it that name in respect to Eugene Holman, the landowner at the time, who would soon thereafter depart for Nairobi, Kenya, to run a cattle ranch. *Peoples' lives are so fascinating, no?*

With now four Training Programs having been held on the site, we know that it is primarily a Caddo site, our much beloved nineteenth century salt furnace notwithstanding. The name "Holman Springs" does not invoke that Caddo connection. So, last fall, we worked with the Caddo Nation to develop a name for the site in the Caddo language that would emphasize that connection (Tahlate and Drexler in press). They developed the name Nakuukuwidish, which we are now going to use with this site. It basically means "Place of the Water-Salt." In Caddo, "na" is a locative,



Madelyn Rose and Tom Brown excavating in Area 1 of 3SV29 during the 2023 Training Program. Photo by Rachel Tebbetts, ARAS.

indicating "place of." So, Nacogdoches and Natchitoches are in this vein. "Kuuku" is water and "widish" is salt. So, Nakuukuwidish (Na-kuuku-widish) combines these.

Why Are We Going Back? What Happened to Arkansas Post?

I'm sure many of you recall that the plan at the end of the last Training Program was that we would be done with the site for the foreseeable future. We were gearing up to move to Arkansas Post for this summer's event and work on French Colonial sites there. So, now we are not, and you should know why.

The Survey and the Society really try hard to teach people how to do archeology the *right* way. Sometimes, that means not doing work that would be done poorly or for which we do not have a clear idea of how the project will be fully finished and available to the public, other scholars, descendant communities, etc. I had a chance to talk with a member of the heritage

staff from one of Arkansas's Indigenous nations about what she wanted to see from archeologists, and her immediate and only response was "finished projects."

The thing is, the Arkansas Post work would have been very ably and well conducted by Dr. Andrew Beaupré, then of the UAPB Station. After the Training Program last summer, an opportunity opened for him at the Maine State Museum, near his family, and he took it. I wish him the best of luck and joy in that new job and thank him for what he brought us here. But, now, missing him, we cannot go forward with Arkansas Post right now, because we do not have anyone sufficiently well prepared to take on that project and see it through to completion. We will see down the road.

What's The Plan?

With that cleared up, let's look at what we're going to do out at Nakuukuwidish. We have dug there now four summers, so what are we going to do to add to that? Well, the initial plan—back before the 2022 Training Program—was born from a difference between excavations at two major Arkansas saltworks, Holman Springs (Nakuukuwidish) and Hardman. The Hardman site, in Clark County, had been machine-stripped by the highway department in advance of construction, giving Ann Early the opportunity to lead a project on it where they could document a huge number of features and get them all on one map and explore patterns within them. Holman Springs was dug in 1985 and 1986 by the Society, who moved a lot of dirt (and sherds), but not to the level that a bulldozer could do. So, we never got the full map of features at Holman Springs to use as a comparison to Hardman. The plan was to do a checkerboard of units to fill in major gaps in the 1980s dig map.

Then, we found the salt furnace, and our efforts to focus on the Caddo component got diverted to explore this other (exceedingly cool) feature. With the furnace now well explored, we can take this summer to conclude the initial plan from back in 2022 and develop a fuller map of the features at the site. We have an emerging understanding of the location of different parts of the Caddo occupation. This summer should help us really figure that out.

Our plan is to go and dig units in the center of the area where we've worked in the past to give us a full-as-we-can-get-in-two-weeks map of the precontact component. Those units will be sited to fill in as much as we can, factoring in the results of a geophysical survey concluded by staff from the SAU Research Station and the Computer Services Program. Obviously, the last two years of doing this work have brought in a tremendous collection of pottery, and you have washed and analyzed over 110,000 sherds from this site. Now that we can be fairly sure that much of that derives from the bulldozed midden mound that used to stand on the site, we plan to sample that stratum this year, so the daily influx of artifact bags to the lab *should* be substantially less.

So... "Digital?"

When we landed on returning to Nakuukuwidish as a focus for this summer's Training Program, I had a thought about something we have been wanting to introduce for some time. Going back to a site we know so well gives us an opportunity to do something that we've been talking about for years. Back in 2019, the Basic Excavation class at Lockesburg Mounds took their field records on tablets (with paper backups). Our intention had been to use that as the first step in a wider rollout of that technology. Then, 2020 happened and, well you know...

It is time to make the move towards collecting field records in digital format, and being back at Nakuukuwidish is a good time to do it, as we're going to be working in an area that we're fairly familiar with and we know a good deal about what the digging will be like. I expect that this introduction will be fairly clunky, and I am okay with things going slowly so that we all learn it and work out the kinks together, but this is the way a lot of archeology is being done now, and we have a great opportunity to take this step together.

Logistics

A lot of the logistics for this Training Program are going to be very familiar. We plan to camp at DeQueen Lake and have the lab at UA-Cossatot, who are thrilled to have us coming back to campus. DeQueen offers the same usual amenities for food and hotels that it has in the past.

For classes, we will have both Basic Excavation and Basic Lab taught both weeks, and during the first week we will also have classes in 3D Scanning, Geophysics, Site Survey, and the Indians of Arkansas.

We also have the opportunity to have a special event on Sunday, June 9. The Executive Committee agreed to bring in Chase Earles, a celebrated Caddo potter, to do a demonstration of how he makes pottery, using traditional and modern designs in his process. He will also do a firing demonstration so you can see how the pots get finished. This should give everyone a valuable explanation of how the pottery sherds we have been digging at the site the past few years have been made. This is a rare opportunity and I'm thrilled to be able to offer it.

So, That's the Deal

I'm really looking forward to seeing this all come together this summer, and I hope to see you all in the field with us. There are some great things we can accomplish together and it will help us finally conclude research that has been in progress since 1984.

See you out there!

References cited

Tahlata, Alaina and Carl Drexler

In Press Naming Nakuukuwidish. *Caddo Archaeology Journal*.

Further reading on Nakuukuwidish

Drexler, Carl G.

2021 "A Response to Perttula Regarding the Dating of the Holman Springs Site." *Field Notes: Newsletter of the Arkansas Archeological Society* 418:8.

2022 "Back in the Field: A Recap of the 2022 Society Training Program at Holman Springs." *Field Notes: Newsletter of the Arkansas Archeological Society* 427:3-6.

Drexler, Carl G. and Fiona A. Taylor

2020 "Radiocarbon Dates from the Holman Springs Site (3SV29), a Caddo Saltworks in Southwest Arkansas." *Field Notes: Newsletter of the Arkansas Archeological Society* 417:7-10.

Perttula, Timothy K.

2021 "Comments on "Radiocarbon Dates from the Holman Springs Site (3SV29), a Caddo Saltworks in Southwest Arkansas" by Drexler and Taylor. *Field Notes: Newsletter of the Arkansas Archeological Society* 418:7-8.

"We're Back!"



"Well, here I am!"

Arkansas Archeological Society Training Program: Nakuukuwidish

June 1–15, 2024 | De Queen, Arkansas

Where, When, What & Who

The 2024 Training Program is a collaborative project between the Arkansas Archeological Survey (ARAS) and the Arkansas Archeological Society (AAS). The Training Program, which will begin Saturday, June 1, and continue through Saturday, June 15, will be held in De Queen, Arkansas, in the southwestern part of the state. Our main base of operations will be at the University of Arkansas-Cossatot. Station Archeologist, Dr. Carl Drexler, ARAS – SAU, will be directing the Training Program.

Membership

Participants must be current (2024) members of the Arkansas Archeological Society. Please go to the Society's website to become a member or to renew your membership: arkarch.org. Contact Gillian Steeno if you have questions about membership (gmsteeno@uark.edu).

Under Age 18 & Minimum Age

All participants under age 18 must have a parent, guardian, or adult sponsor with them. **The adult must also register and be with the child at all times.** Minimum age is 8 years old. No children younger than 8 years old may participate in the Training Program and no unregistered children are permitted on site or in the seminars.

Registration, Cancellations & Refunds

The deadline for early registration is May 3. After May 3, late registration will incur a \$15 late registration fee. Registrants must sign and return the accompanying Project Participation Agreement, Release, and Waiver, and the Code of Conduct form with their registrations. If you need to cancel your attendance at the Training Program, please be sure to contact Gillian Steeno (gmsteeno@uark.edu) and let her know. All cancellations made by **Monday, May 13** will receive a full refund. Cancellations **after** May 13 will **not** receive a refund.

Students

If you are a student who has made arrangements with their advisor to receive credit hours for attending the Training Program, please be sure to indicate this on the registration form. Gillian Steeno will contact you to request more information.

Directions

The Training Program Headquarters will be at the Adams Agricultural Building on the UA-Cossatot campus located off of US 70 West (W. Collin Raye Dr.), 183 College Dr., De Queen, about two hours and 34 minutes' drive (145 miles) southwest on US 70 West from Little Rock, about an hour drive (55 miles) north on US 71 N from Texarkana, two hours and 39 minutes' drive (138 miles) south from I-40 on US-71S.

Facilities

The AAS Headquarters, field lab and seminars will be located in the Adams Agricultural Building. Orientation and the evening programs will be held in the Skilled Trades Building.

Check-In

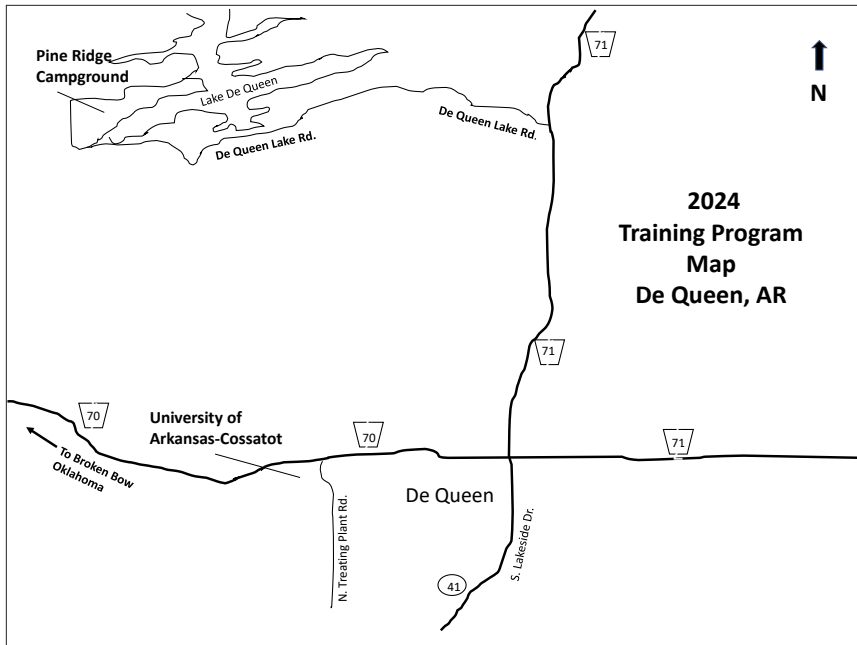
Our workday starts at 7:00 in the morning, so you should **arrive the day before** you intend to start your first day of work. When you first arrive, the first stop should be at Headquarters to check in and collect your 2nd Packet of information and name badge. Headquarters will be staffed each work day from **7:00 am until 5:00 pm**.

Accommodations

Motels and Lodges

Call or visit websites for rates, amenities, and availability. Mileage noted below indicates the distance to Headquarters at the UA-Cossatot campus.

- De Queen Courtyard Inn, 111 Hwy 71, De Queen, (870) 642-2034, (2.3 miles)



Map of the De Queen / UA-Cossatot / Pine Ridge Campground area.

- Palace Motel, 607 W. Collin Raye Dr., De Queen, (870) 642-9627 (1.4 miles)
- Western Plaza Inn, 110 Hwy 71, De Queen, (870) 642-6990 (2.2 miles)
- The Lodge at De Queen Country Club, Club House Dr., De Queen, (870) 642-8800 (5.3 miles)

Society Campground
IMPORTANT – PLEASE READ!

The Society campground will be located at the US Army Corps of Engineers’ Pine Ridge, which is located on the shores of Lake De Queen. There are fire rings, picnic tables, electrical (30 and 50 amp) hook-ups, and water at the camp sites. There are two new shower buildings each with two showers for women and two for men. There is no designated swimming at the campground but campers can swim at their own risk.

Ten RV sites have been secured and prepaid by the Society to keep all camping participants together as much as possible. Just like last time, we will be sharing RV sites with tent campers; a maximum of two tents per site with RV. This will enable us to share electricity with tent campers. Generators are not allowed. You must pay for every day that your RV or tent is set up, even if you are not there.

ALL SOCIETY CAMP SITES WILL BE ASSIGNED ON A FIRST COME, FIRST SERVED BASIS.

If you arrive and there isn’t a spot in the Society campground, your payment for camping will be refunded to you and you will need to find a camp site at Pine Ridge in the non-reservable sites or non-electrical sites or other accommodations. The campground attendant and Society Camp Boss will work with you to locate a spot.

Refunds for camping will only be made for those who arrive and are unable to secure their pre-paid Society camp spot, and need to camp in a non-Society spot at Pine Ridge. Non-Society camping spots are pricing around \$25 a night, depending on the spot. This is a large fee increase from last year, so make sure to arrive early to secure your Society camp spot!

The Society camping spots are reserved Wednesday, May 29 through Saturday, June 15. Check out for campers that are still there on Sunday, June 16, is 5 pm. Payment to the Society is as follows: tents - \$9 per night; pop-ups - \$12 per night; and, RVs - \$15 per night. If you come earlier or stay longer, you will need to make your reservations through recreation.gov or call 1-877-444-6777. This is also true if you decide to camp in a non-Society camping spot, although most non-Society camping spots are “walk-up” only.

The main road to Pine Ridge is De Queen Lake Rd., just off of Hwy. 71. If that road is flooded, use Bellah Mine Rd., approximately 5 miles north of De Queen Lake Rd. Follow the signs. Call the Army

Field Notes

Corps of Engineers Office at 501-324-5655 to find out the status of the road. When you arrive, find the Society Camp Boss who will help you find a camping spot. Campground check in is 6:00 pm ending at 9:00 pm. No set up after 10:00 pm. That is when quiet hours begin. Give yourself extra time to set up your tent or camper.

Transportation

Transportation to and from the sites will be by ARAS vehicles. All participants who are camping will need to meet at the designated spot at camp to ride in the vehicles going to Headquarters, lab, and seminars, and from there, to the site. Those participants not staying in the camp (staying in hotels or commuting from home), can park at the UA-Cossatot, Adams Agricultural building parking area. The vehicles will stop there to pick up anyone needing to go the field.

Food and Ice

Each person is responsible for their own meals. There are several stores in De Queen to shop for food, ice, and other items you might need. You should bring lunch with you each day, regardless of whether you will be working in the field, in the lab, or attending a seminar. Vehicles will not be returning to camp for lunch.

Basic Schedule

You may come to the Training Program for as long or short a time as you like. Please note: **WE WORK EVERYDAY**, except Monday, June 10, our only day off. We will start the workday at 7:00 am when the vehicles will leave for the site from UA-Cossatot. For campers, the vehicles will leave the campground at 6:30 am, heading to UA-Cossatot. Lunch break will be from 10:30 – 11:30 am, and the workday ends at 3:30 pm, allowing attendees time to rest and relax before supper and attending any evening talks or other activities. A detailed schedule of all activities, seminars, evening programs, and special events will be in the 2nd Packet of information that you will pick up at Headquarters when you arrive. Announcements and work schedules will be posted in camp and on the door at

May 31	Friday	Set up camp, Headquarters, and Lab Staff and Supervisors Meeting at 4:00pm
June 1	Saturday	First Orientation, Lab, Field Activities begin at 7:00am (Vehicle pick-up from camp is at 6:30am)
June 3	Monday	1st Session Seminars start
June 7	Friday	Last day of 1st Session Seminars
June 8	Saturday	Site Stewardship Training
June 9	Sunday	Chase Earles' pottery demonstration
June 10	Monday	DAY OFF! No field or lab activities New Supervisors meeting at 5:00pm Last Orientation at 1:00pm!
June 11	Tuesday	2nd Session Seminars start
June 15	Saturday	Last day of 2nd Session Seminars
June 16	Sunday	Close excavations (if needed) and pack up

Orientations

All first-time attendees must attend the Orientation prior to participating. Orientations will be scheduled as follows:

- Saturday, June 1 (7:00 am)
- Sunday, June 2 (7:00 am)
- Monday, June 3 (7:00 am)
- Friday, June 7 (1:00 pm)
- Monday, June 10 (1:00 pm)

Please indicate which Orientation you will attend when registering. If none of the scheduled Orientations work for your plans, please contact Gillian Steeno to discuss; gmsteeno@uark.edu or 479-575-3557. Anyone is welcome at Orientation, no matter if you're a new participant or a returning one who wants a refresher.

Seminars

In addition to excavating and working in the lab, Training Program participants have an opportunity to register for a variety of seminars. You must register for seminars in advance on the Registration Form. Seminar instructors may choose to cap the number of participants they allow due to space or the nature of the course, so be sure to register early. Seminars fill up fast!

New participants are strongly encouraged to sign up for one of the Basic Seminars: Basic Excavation, Basic Lab, or Site Survey. Basic Excavation is especially recommended and is a full-day seminar.

Participants may take one seminar each weekly session of the Training Program. Some seminars require completion of prerequisites, unless special permission is granted, as noted below. Most seminars are held for 4 hours each day and last for 5 days. Participants must attend all days of a seminar to complete it. Since most seminars take half of each day, participants are able to do fieldwork or work in the lab the other half of the day.

There are no seminars on Saturday and Sunday, June 1 – 2 nor Sunday and Monday, June 9 – 10. Seminars may be subject to cancellation if fewer than 3 people register.

Seminars – Session 1

Monday, June 3 through Friday, June 7

- **Basic Excavation:** TBD (Full-day seminar)
This is one of three basic seminars that gives participants a guide to archeological excavation and the proper methodology used by archeologists in the field. This seminar combines both classroom and field instruction that covers topics ranging from tools of the trade to unit profile drawing to screening artifacts to ethical considerations.
- **Basic Lab:** Taylor Greene (Half-day seminar, PM)
Another basic seminar, encouraged for first-timers, this half-day seminar focuses on proper lab documentation once artifacts come in from the field. This includes artifact washing, rough sorting, and proper bag labeling to ensure proper curation of artifacts post-Training Program.
- **Geophysics:** Jami Lockhart (Half-day seminar, PM)
This seminar will include discussions, demonstrations, and hands-on experience for cultural landscape studies ranging in scale from statewide down to individual archeological features. Topics will include geophysical remote sensing, high-accuracy mapping, aerial photo interpretation, image processing, LiDAR analysis, GIS data development, archival research, and archeology.

- **Indians of Arkansas:** Julie Morrow (Half-day seminar, PM)
*This course is about cultures indigenous to what we now call Arkansas, from ancient times (ca. 13,500 years ago) to the early nineteenth century. Textbooks used as the basis for this course include George Sabo's **Paths of our Children: Historic Indians of Arkansas** (available for purchase from the Survey) and a free reader that will contain articles by authors who are noted specialists of particular time periods in Arkansas.*
- **Site Survey:** Bob Scott (Full-day seminar)
Site Survey is the third basic seminar offered each Training Program that offers training in a broad survey context. Topics will include experience using compasses, pacing off shovel-test pits, screening for artifacts, documenting survey information, and filling out archeological site forms.
- **3D Scanning:** Sarah Shepard (Half-day seminar, AM)
This seminar will cover the range of 3D techniques that the Survey uses for different aspects of virtual curation and public outreach. In addition to the outline of methodology, this course will offer hands-on experience with multiple types of scanning and imaging as well as a basic introduction to 3D printing.

Special Interest Workshop

Saturday, June 8

- **Site Stewardship:** Mel Zabecki and Gillian Steeno (Full-day seminar)
Archeological sites are at risk of destruction due to environmental and human-made causes. Join your fellow Society members who are interested in learning what kinds of things can be done to help protect sites; maybe take it one step further and apply to become a site steward!

Seminars – Session 2

Tuesday, June 11 through Saturday, June 15

- **Basic Excavation:** Jessica Kowalski (Full-day seminar)
- **Basic Lab:** Taylor Greene (Half-day seminar, PM)

- **Human Osteology:** Mel Zabecki
(Half-day seminar, PM)
Basic knowledge of human osteology can come in handy in the field and lab for identifying and isolating human remains. This seminar will be a crash course on the individual landmarks on the human skeleton and it will also cover the ethical considerations of disturbing and studying human remains.

Assignment of Activities

The assignment sheet will be posted as soon as possible each evening at Headquarters and all participants should be sure to check the assignment sheet each morning before heading to seminars, field, or lab for possible changes. All participants are responsible for adhering to the assignments given to them. The assignments given and any possible changes made reflect where workers are most needed in the lab and in the field in order to accomplish research goals. Any requests to be moved to another work area or to have time off must be done in advance and first brought to the Training Program Director for approval and then communicated to Gillian Steeno at Headquarters. The Training Program Director, Dr. Carl Drexler, will make final assignments and participants must abide by the decision.

First Packet of Information

Registrants will receive a detailed information packet and seminar assignment information shortly after May 13. Please indicate on the Registration Form if you would like to receive the information packet by email. A second packet with additional information will be distributed at the Training Program when you arrive and check in at Headquarters.

Tools of the Trade

You may want to build your own personal “excavation kit” and the Society will have for sale some of the small tools you will need. These include for example, a 3-meter metric measuring tape, a Marshalltown trowel, and a string line-level. Also for sale will be textbooks for seminars, t-shirts, ARAS and AAS publications, and memorabilia. You will need to bring

items with you from home: a clipboard to hold all your paperwork, sturdy gloves, and pencils. A list of recommended supplies will be in the first packet of information that will be sent to registrants. We can take credit cards at Headquarters, but remember to bring your checkbook or cash as backup in case technology fails us!

Weather and Wildlife

You can generally count on the weather to be hot and very unpredictable in Arkansas in the summer-time. Come prepared for any kind of weather. Be sure to bring plenty of insect repellent for ticks, chiggers, and mosquitoes. We will have sunshades out there to provide protection from the sun and lots of water so be sure to bring a water bottle! Bring lots of sunscreen and reapply often. A good hat with a wide brim and wearing long sleeves will help you too. There may be wildlife in the campground and at the site. Make sure you secure your food and tents at the camping areas in the evening and before going out to the field and pick up the trash at the site before coming in from the field each day. There will likely be rain, even some strong thunderstorms, so be prepared with rain gear too. Sturdy boots are also a good idea.

The Bottom Line

We have a great opportunity here to learn a lot about Arkansas’s past! This is the most inexpensive archeological training experience available within the United States. What better way to learn about Arkansas archeology and do archeology the ethical way? If you are reading this and considering registering for the Training Program, that means that you share the same interests as so many AAS members and so many before you: the love of the outdoors, the love of people, history, science, anthropology, archeology, and learning, participating, and contributing to something that will benefit more than just you. You are a volunteer! Without you, none of this would be possible! If you attend this dig, you will find more than just dirt, sweat, and bug bites. You will find old friends, new friends, and camaraderie unlike anywhere else. This program is an opportunity to create lifelong memories, so come join in on the fun!

Hester Davis Arkansas Archeological Society Archeology Training Program Scholarship

Hester A. Davis (1930–2014) was an American archeologist, and as Arkansas's first State Archeologist, she was instrumental in creating national public policy and conservancy standards for cultural preservation, as well as developing professional and ethical standards for archeologists. She was the recipient of numerous awards and honors, including two distinguished service awards and induction into the Arkansas Women's Hall of Fame. This scholarship is offered in her memory.

This scholarship applies to the joint Annual Arkansas Archeological Society (AAS) & Arkansas Archeological Survey (ARAS) Training Program only. We do not fund other field schools.

AAS members 18 and older, who are currently enrolled in college or graduate school and who are majoring, or planning to major, in archeology, anthropology, or a related field (e.g., cultural studies, museum studies, geography, etc.) are eligible to apply for scholarship support. Rising freshmen, or recent college graduates who will be enrolling in a graduate program in the next academic year, are also eligible. Please note that the number of scholarships awarded will be limited to the annual amount of interest from which the scholarship funds are drawn. To apply, please submit the following:

- A completed Training Program Registration Form listing your expenses (note: T-shirts are not included in this grant), along with the Project Participation Agreement, Release, and Waiver form. We pay registration, camping fee for one person, and electricity (if used). We will fund a \$100 stipend for food and gas for one-week applicants and \$150 stipend for two-week applicants. This scholarship will also include an AAS student membership for the current calendar year. This includes emailed or mailed print copies of our publications: the Arkansas Archeologist and Field Notes. Visit <https://www.arkarch.org/activities/the-training-program/> for a Training Program Registration form. You will need to print out your registration form – do not submit through the website. It must be printed and mailed or scanned and sent by e-mail.
- Statement of Interest (1-2 pages) describing your interest in archaeology, future education and career plans, and why the Training Program will benefit you as you work toward your goals. Applicants should indicate if they wish to attend one or two weeks of the training program. Please include discussion of any seminars you will attend and how these classes will help you attain your goals. Our Training Program is often applicable to college credit hours – check with your advisor.
- A list of college courses and other relevant training you have taken. Please indicate where and when.
- One letter of reference from a professor or instructor which may be mailed or emailed separately by your professor or instructor to the address below.

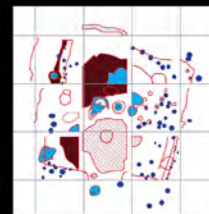
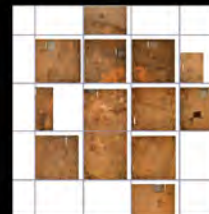
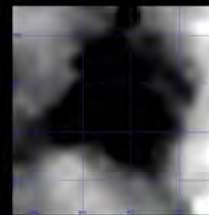
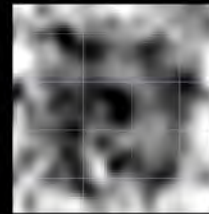
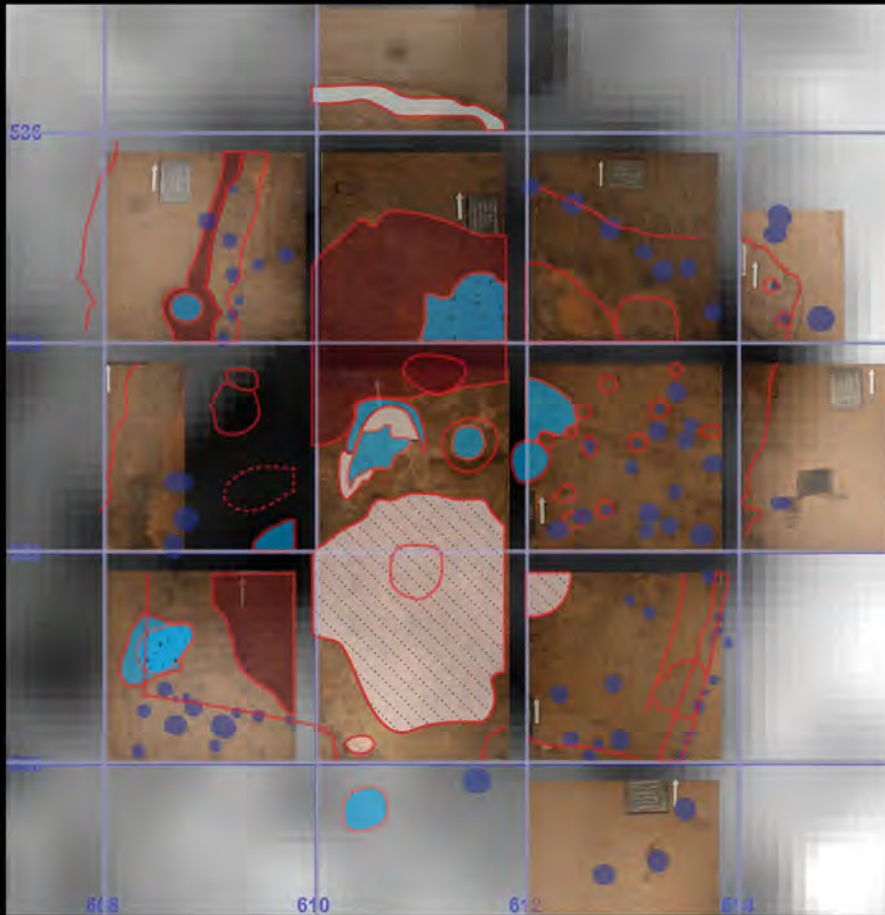
Applications are accepted until April 15th for the following June Training Program and must be post marked accordingly to be accepted. All items requested must either be on paper and mailed or scanned and sent electronically to the contact below.

E-mail: aasociety@arkarch.org
gmsteeno@uark.edu (Gillian Steeno)



Arkansas Archeological Society
ATTN: Training Program Scholarship
2475 N. Hatch Ave.
Fayetteville, AR 72704

Visualizing the Past



Arkansas Archeology Month 2024

This precontact house is one of 60 identified at the Richards Bridge site (3CT11), a Parkin phase town in Northeast Arkansas that was occupied during the late Mississippi period, circa 1450 C.E. The images above show representations of the same archeological site using four distinct types of technology: (from top) magnetic susceptibility, electrical resistance, excavation photography and mapping.



Arkansas Archeological Survey: arkansasarcheology.org
Arkansas Archeological Society: arkarch.org

Membership List for January – February 2024

Please note that all memberships submitted after October 1, 2023 were credited with a membership for the 2024 year. This is the case for each calendar year.

NEW MEMBERS

Life

Lora Shockley, Lakeview
Chad Webb, Rosie

Joint Life

Mark Shockley, Lakeview

Active

Kristi Bennett
Brittney Bostian, Star City
Randi Brown, Conway
Jeremy Clift, Fayetteville
Lisa Coleman, Mountain Home
Will Drummond, Springdale
Amr Elsaid, Fayetteville, NC
Glenna Fisk, Yellville
Judy Kay Lindholm, Little Rock
Brianna McCartney, Texarkana
Lilly McKee, Monticello
Bill Odom, El Dorado

Student

Melissa Alvarado-Perez,
Springdale
Taylor Essary, Fayetteville
Naomi Maxwell, Sherwood
Maggie Nash, Alexander
Tina Nguyen, Russellville
Laney Parrish, Booneville
Breanna Scantling, Hot Springs
Gabrielle Stockand, Bella Vista
Sydney Temple, Cabot

Family

Bria McCartney, Texarkana

RENEWALS

Business/Institutional

Acquisitions Department, Urbana, IL
Acquisitions Section - Wisconsin Historical Society, Madison, WI
American Museum of Natural History- Library, New York, NY
Arkansas State Library- Collection Development, Little Rock
ASU Library Continuations, Mesa, AZ
Bizzell Memorial Libraries, University of Oklahoma, Norman, OK
Central Arkansas Library Periodicals, Little Rock
Clark County Historical Association, Arkadelphia
Davis Library Serials Management, Chapel Hill, NC
Dupre Library- University of Louisiana at Lafayette, Lafayette, LA
Hodges Library, University of Tennessee- Knoxville, Knoxville, TN
Huie Library Serials-HSU, Arkadelphia
Magale Library- SAU, Magnolia
Morris Library- SIU, Carbondale, IL
Museum of Native American History, Bentonville
New York Public Library, Periodicals Division, New York, NY
Osage Nation Historic Preservation, Pawhuska, OK
Parkin Archeological State Park, Parkin
Serials Acquisition- Tozzer, Harvard Library, Cambridge, MA
Serials Acquisitions, University of Iowa Libraries, Iowa City, IA
University of Arkansas Libraries, Fayetteville, AR
University of Chicago Library, Chicago, IL
Washington University- St. Louis, St. Louis, MO

Membership List for January – February 2024 (continued from p.13)

Supporting

Toney Aid, West Plain, MO
James Alumbaugh, Conway
Bill Beall, Fort Smith
Ronald Bradley, Gould
Don Brown, Fayetteville
Mitchell Childress, Memphis
Terry Childs, Cordova, TN
Roger Coleman, Benton
Mia Cornelius, Ben Lomond
Benjamin Davis, Lowell
Carl Drexler, Magnolia
Denise Furness, Greenwood
Steven Jacober, Trenton, IL
Joshua Lockyer, Russellville
Bo Nelson, Pittsburg, TX
Ruth O'Loughlin, Lake Village
Jerry Rose, Fayetteville
Nancy Russell, Pantego, TX
Maria Schleidt, Edwards, MS
Frank Skinner, Little Rock
Lyle Sparkman, Springdale
Steve Stevens, Bono
Kevin Thornton, Conway
Gary Walker, Horatio

Active

Michael Bell, Bentonville
Larry Billings, Cotter
David Bentley, Searcy
Taylor Boyle, Morrilton
Cindy Brooks-Weaver, Crossett
Tom Brown, Rogers
Leslie Bush, Manchaca, TX
Leon Chapman, Tillar
Pritam Chowdhury, Fayetteville
Banks Conditt, Fayetteville
Delbert Danielson, Russellville
Margaret Demby, North Little Rock
Laura Donaldson, Hot Springs
Cicely Drummond, Springdale

Paul Francis, Monticello
John Garcia, Flippin
Lloyd Goff, Jonesboro
Larry Grant, Franklin
Taylor Greene, Magnolia
Shayla Grimmert, Little Rock
Jennifer Haines
Scott Hammerstedt, Norman
Charles Hannon, Dillsburg, PA
Dawn Howe, Little Rock
Steven Kirschman, Pearcy
Jessica Kowalski, Fayetteville
Mary Kowalski, Hot Springs Village
Maureece Levin, Little Rock
Tamar Mannikko, Hot Springs
Susan McNutt, Mountain Home
Justin Minor, Fort Smith
Mason Oury, Fayetteville
Wanda Owens, Malvern
Sharon Pekrul, Columbia, SC
Liliana Petrovic, Pearcy
Joseph Rainey, Rogers
Ruth Ready, Little Rock
John Riggs, Austin
Lynn Risser, Fayetteville
Kathey Rue, Ozark
Danna Schneider, Clarksville
Cynthia Skinner, Jacksonville
Samuel Smith, Mount Joliet, TN
Gillian Steeno, Springdale
Judith Stewart-Abernathy, Dardenelle
Alfred Strakshus, Hot Springs
Mary Beth Trubitt, Bismark
Neal Trubowitz, Andover, MA
Mark Walters, Kilgore, TX
Joe Wankum, Conway
Gene Waters, Western Grove

Student

Steve Acree, Ada, OK
Liley Bozard, Fayetteville
Lillian Bradshaw, Searcy
Valerie Contreras, Fayetteville
Halee Mills, Bono

Family

Peggy Chapman, Tillar
Mona Churchwell, Little Rock
Melinda Coleman, Benton
Robin Danielson, Russellville
Roberta Demby, North Little Rock
Donna Francis, Monticello
Margaret Grant, Franklin
Kendall Goff, Jonesboro
Charles "Rusty" Grimmert, Little Rock
Wanda Grimmert, Little Rock
Otis Howe III, Little Rock
Gary Kowalski, Hot Springs Village
Allan Owens, Malvern
Tanya Petrovic, Pearcy
Lewis Rue, Ozark
Gale Sawyer, Rogers
Martha Sparkman, Springdale
Leslie "Skip" Stewart-Abernathy, Dardenelle
Sunni Weaver, Crossett
Tim Weaver, Crossett

Join or Renew Your Membership for 2024

All yearly Society memberships follow the calendar year beginning with January; members who renew from January through September will receive back issues of missed publications; if joining or renewing after October 1st, your membership (and publications) will begin the following January. (Life & Benefactor members do not need to renew but please notify us with any change of address.)

You can use the form below to join by mail OR join/renew online at <http://arkarch.org/register/>

For change of address, questions about membership or subscriptions: Please contact Gillian Steeno, Arkansas Archeological Society, 2475 North Hatch Ave., Fayetteville, AR, 72704, gmsteeno@uark.edu.

Information for Contributors

Electronic submissions are preferred. Please send articles to *Field Notes* in Word. Minimal formatting should be applied to the text. Use of bold and *italic* is all right. Use a common, boring font like Times New Roman. Send any illustrations that will accompany the article as separate files, do NOT embed them in the Word document. Preferred graphic formats are tiff or jpg but pdf will also often be acceptable. All illustrations (photos, maps, line art, and any other type of graphic) should be produced at 300 dpi, and graphic files submitted for publication should be sized NO SMALLER than 300 dpi resolution with a physical size (that is, image dimensions in inches) at least 4x6 inches. If you know the image should be reproduced at full page in order to be readable, make sure it is sized NO SMALLER than 300 dpi resolution and 8x10 inches physical dimension. Tables can be sent as separate Excel files (preferred for large tables) or typed into the Word document. PLEASE DO NOT EMBED ILLUSTRATIONS INTO THE WORD DOCX OR ANY OTHER APPLICATION, AND DO NOT SEND YOUR ARTICLE AS A PDF. If for some reason you cannot meet these standards, PLEASE do not hesitate to contact me and I will help you find another way to submit your material. Thank you!

Julia Fan, Editor (juliaf@uark.edu)

MEMBERSHIPS Annual Payment Plans

Business	\$100.00
Institution/Agency	\$35.00
Supporting	\$35.00
Active	\$25.00
Family (each add'l person)	\$2.00 (see Notes below)
Student (K–12 & UG)	\$10.00

Single Payment Plans

Benefactor/Joint Benefactor	\$500.00 / \$600.00
Life/Joint Life	\$300.00 / \$350.00

(Joint Memberships are Member + Spouse)

First Class Postage

Save delivery time. \$7.50 additional per year.

MEMBERSHIP NOTES:

STUDENT MEMBERSHIP is for K–12 and university undergraduate students. Only *Field Notes* is sent. Cannot add Family members.

FAMILY MEMBERSHIP \$2.00 each additional person when 1 person is already a full member (Active, Supporting, Benefactor, or Life). Only the full member receives publications.

BENEFACTOR, LIFE, & related JOINT memberships may be paid in two equal annual payments.

BUSINESS has membership privileges. **INSTITUTIONAL** is subscription only.

OFFICE USE ONLY:

Database _____ AC _____
 Electronic FN _____ L _____
 RN _____ CK# _____

Yearly memberships run from January until December. Note that local chapter membership forms and dues are separate from the statewide organization.

I heard about the Society:

On TV On the Radio In the Newspaper On the Web Through a friend Other _____

New Address? Renewal? New Member?

2024

NAME _____

ADDRESS _____

PHONES: Home [] _____

Work [] _____

E-mail: _____

Go paperless: I would like my copy of *Field Notes* e-mailed to me.

*Names of paid Family Memberships: _____

Total Memberships or Subscriptions \$ _____

1st Class Postage for *Field Notes* (\$7.50) (optional) \$ _____

Donations:

Archeological Research Fund \$ _____

Bill Jordan Public Education/Archeology Month Fund \$ _____

Consultation Fund \$ _____

Unspecified Gift \$ _____

TOTAL REMITTANCE \$ _____

Yes, I would like a receipt for my donation.

Send this form and make checks payable to :

ARKANSAS ARCHEOLOGICAL SOCIETY

2475 N. Hatch Ave.

Fayetteville, AR 72704

www.arkarch.org

Field Notes
Of the
Arkansas Archeological Society
[ISSN 0015-0711]
2475 N HATCH AVE.
FAYETTEVILLE AR 72704

NON-PROFIT ORGANIZATION
U.S. POSTAGE PAID
FAYETTEVILLE, ARKANSAS
72701
Permit Number 177

CHANGE SERVICE REQUESTED

www.arkarch.org

Arkansas Archeological Society Officers 2024

PRESIDENT

Steve Longacre, Rogers
(2024–2025)

PAST PRESIDENT

James Rees, Fayetteville

TREASURER

Jannette Akridge, Fayetteville
(2022–2024)

VICE PRESIDENTS

Steve Jacober, Trenton IL (2023–2024)

Liley Bozard, Fayetteville (2023-2024)

Shayla Grimmert, Little Rock (2024–2025)

Ruth O’Laughlin, Lake Village(2024–2025)

RECORDING SECRETARY

Anthony Clay Newton, Magnolia
(2022–2024)

EDITORS

Glen Akridge – *Bulletin*

Julia Fan – *Field Notes*

CHAIR, BOARD OF ADVISORS

Gary Knudsen, Russellville

Arkansas Archeological Society Chapters

Three Rivers Chapter, Mountain Home meets monthly on the fourth Saturday at the Don Reynolds Library in Mountain Home. No meetings June, Jul, Nov, Dec. Contact: Mark Shockley 870-404-7239; shockark@gmail.com

Arkansas River Valley Chapter, Petit Jean Mountain meets monthly (except Aug.) on the first Tuesday evening at the Arkansas Tech University Museum, 1502 North El Paso Avenue, Russellville, AR 72801. Contact: Josh Lynch, jlynch8@atu.edu

Central Arkansas Chapter, Little Rock Contact: Rita Fisher, fisherrita92@gmail.com

Ouachita Chapter, Hot Springs meets monthly (except June) on the first Tuesday at 7 pm, ASMSA board room, 200 Whittington, Hot Springs. Contact: ouachitachapter@gmail.com or Mary Beth Trubitt 870-230-5510.

Ko-ko-çi Chapter, Fayetteville meets monthly (except Jan. & June–Aug.) on the second Wednesday evening at the Washington Co. Extension Office. Contact: Joe Rainey jrainey1947@gmail.com

Central Mississippi Valley Chapter, Jonesboro meets monthly (except June–Aug.) at the ASU Museum. For details contact: Julie Morrow 870-972-2071; jemorro@uark.edu

Red River Chapter, Magnolia meets monthly (except June–Aug.) on the second Tuesday evening at the Donald W. Reynolds Campus & Community Center, SAU. Contact: Carl Drexler 870-235-4230; cdrexler@uark.edu

Tunican Chapter, Monticello meetings can vary in frequency and location, typically on UAM campus. Contact: Paul Francis 870-723-3097.

Ark-Homa Chapter, Fort Smith meets monthly (except May–Aug.) on the third Thursday evening at Flanders Building Room 100, UAFS campus. Contact: Tim Mulvihill 479-788-7813; mulvihill@uark.edu